

AETES

NETWORK RACK ATS

Remote Management

ATS and 10 port PDU in-one

Rackmount 1U Compact Design

ATS2250

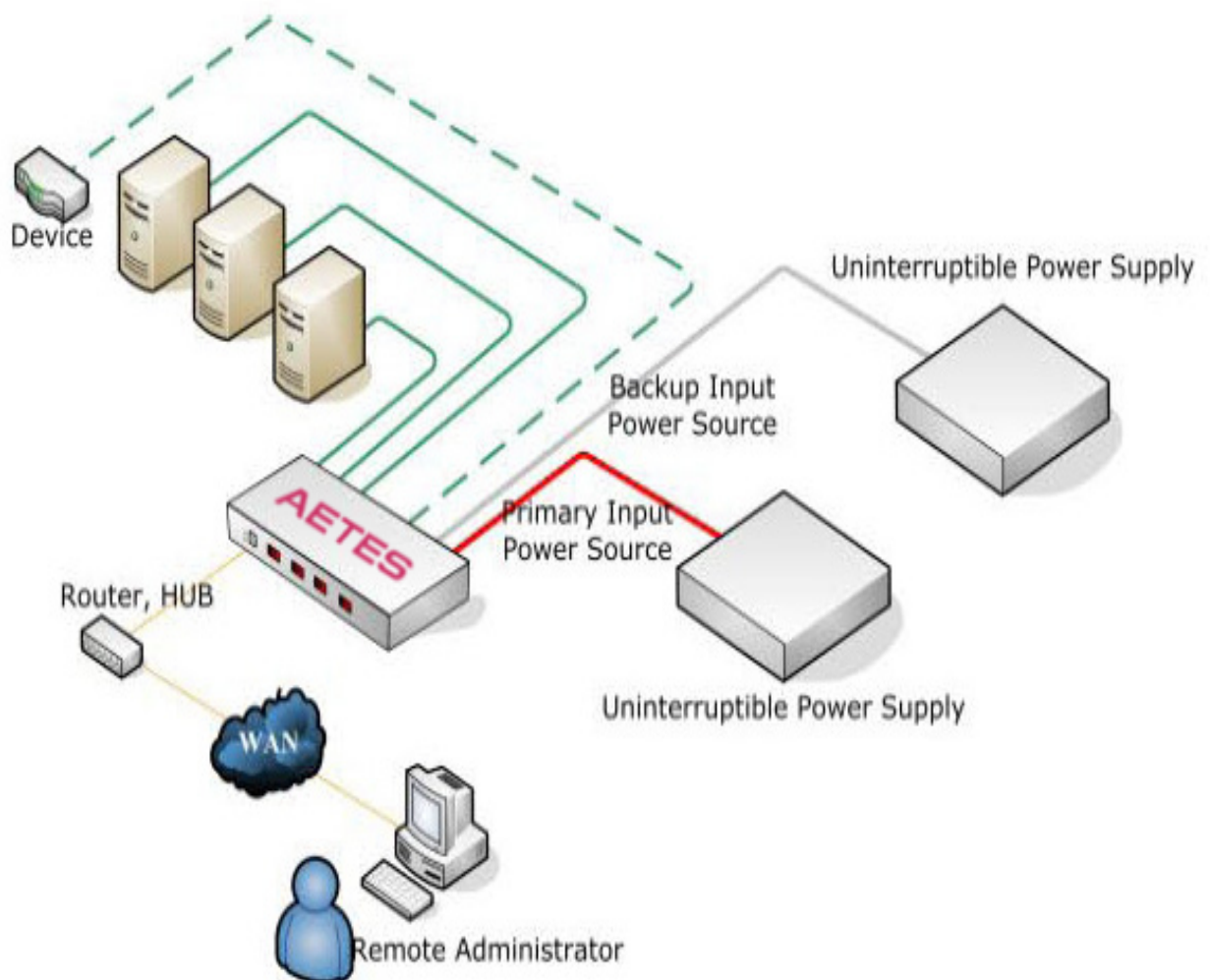


"...power alliance..."

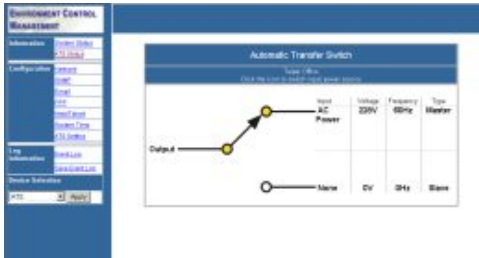
DESCRIPTION

The AETES Rack ATS2250 is a Mono Phase Dual Input Rackmount ATS+PDU. This is an effective solution that builds in redundancy and increases the AC power availability of connected equipment. If the dual input power is fed through two independent AC sources, then the system availability is increased and the dual input advantages are fully used. The AETES Rack ATS2250 provides 10 outlets that distribute redundant AC power and may be rackmount. Energy information including Voltage, Current and kWh.

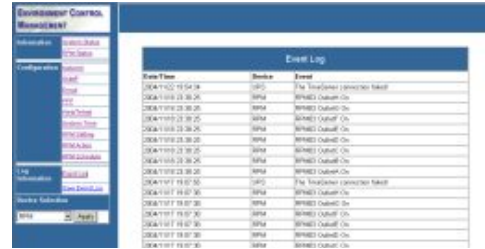
APPLICATION



SOFTWARE INTERFACE



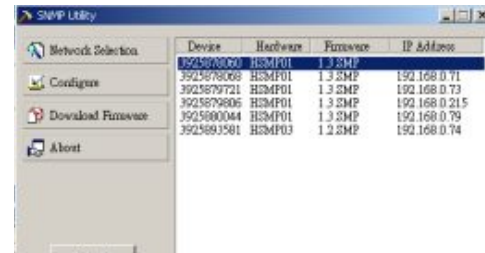
ATS MANAGEMENT



EVENT LOG



SNMP MANAGEMENT



SNMP UTILITY

GENERAL SPECIFICATION

Output	<i>10 x IEC320 C13 Outlet</i>
Input	<i>2 x IEC320 C20 Inlet</i>
Power Monitoring	<i>Voltage + Current + kWh</i>
Display	<i>4 DIGIT</i>
Enclosure	<i>19" 1U Rackmount Compact Steel Case</i>
Color	<i>Black RAL9004</i>
LAN Interface	<i>RJ45 10/100M Auto Detect</i>
Nominal Voltage	<i>230 VAC 50/60 Hz</i>
Transfer Time	<i>8-12 ms</i>
Temperature	<i>10°C...+50°C</i>
Altitude max.	<i>3000 m above sea level</i>
Humidity	<i>10% ~ 80%</i>
Dimensions	<i>5,5 kg</i>
Weight	<i>432 X 44 X 236 mm</i>
Warranty	<i>3 Years</i>