

# AETES

## SWITCHED PDU SERIES

*Remote Power Management  
Management Software Included  
Built-in Reliable True RMS Current Meter*

# AS2080



*"...power alliance..."*

## DESCRIPTION

AETES Switched PDU allows an admin to access the PDU from a remote terminal and interface with it to turn on or off outlets and control load by web and SNMP. This can be helpful if a remote machine has gone into an unresponsive state and cannot be restarted through normal means. An admin can connect to the PDU the machine is plugged into to power cycle the machine.

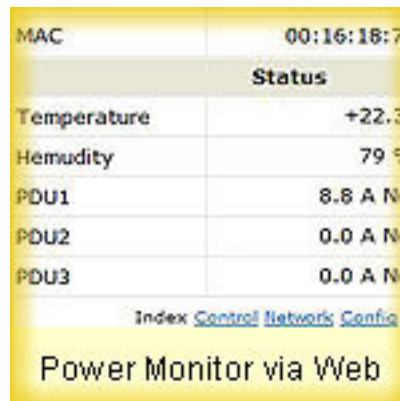
## FEATURES

- Integrated web server manages real time current consumption of PDU.
- Built-in true RMS current meter.
- Easy set up, meter display IP address.
- Audible Alarm - 2 separate warning audible signals for threshold warning and overload.
- Email and SNMP traps sent when power exceeds warning threshold or overload threshold.
- Free utility software for managing multiple PDU's.
- MIB provided for NMS support.
- Circuit Breaker power protection.
- Low profile, slim design makes it easy to mount in server cabinets.
- Real time, remote on/off power control of each receptacle.
- LED on each receptacle to indicate power status.
- Power on sequencing to avoid in-rush of power.

## SOFTWARE



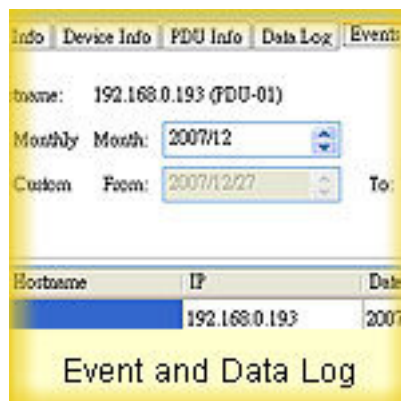
Power Control via Web



Power Monitor via Web



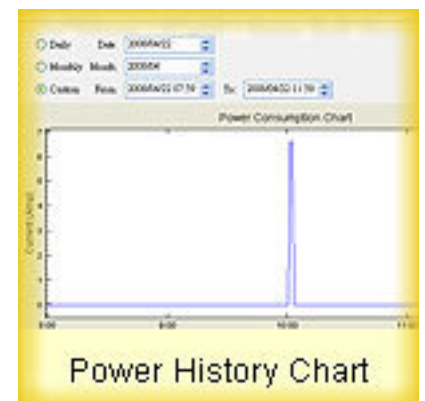
Email Alert via Web



Event and Data Log



Group Management



Power History Chart

# AS2080 SPECIFICATION

---

<b>Output</b>	<i>(8) IEC320 C13</i>
<b>Input</b>	<i>(1) IEC320 C20 Inlet</i>
<b>Protection</b>	<i>(1) 16A Circuit Breaker</i>
<b>IP Address</b>	<i>(1) Yellow LED</i>
<b>PDU Status</b>	<i>(1) Green LED</i>
<b>Power Status</b>	<i>(8) Red LED</i>
<b>Power Monitor</b>	<i>(1) RJ45 for Ethernet</i>
<b>Current</b>	<i>3 Digits Seven Segments for True RMS Meter Range: 0 A ~ 20 A Resolution: 0.1A Precision: +/-2%+/-0.1 A</i>
<b>Nominal Voltage</b>	<i>230 VAC</i>
<b>Voltage</b>	<i>200 VAC~ 240 VAC full range</i>
<b>Frequency</b>	<i>50/60 HZ full range</i>
<b>Max. Current</b>	<i>16 A</i>
<b>Temperature</b>	<i>0 ~ 40 C</i>
<b>Humidity</b>	<i>0% ~ 90%</i>
<b>Size</b>	<i>1U x 19" x 56 mm</i>
<b>Weight</b>	<i>2 kg</i>

## MODELS

---

<b>AS2080</b>	Rack PDU 1U 16A 230V IEC320 C20 Plug	(8)C13 Outlet
<b>AS2071</b>	Rack PDU 0U 16A 230V IEC320 C20 Plug	(7)C13 (1)C19 Outlet
<b>AS2142</b>	Rack PDU 0U 16A 230V IEC320 C20 Plug	(14)C13 (2)C19 Outlet
<b>AS2213</b>	Rack PDU 0U 16A 230V IEC320 C20 Plug	(21)C13 (3)C19 Outlet
<b>AS3142</b>	Rack PDU 0U 32A 230V IEC309 Plug	(14)C13 (2)C19 Outlet
<b>AS3123</b>	Rack PDU 0U 32A 230V IEC309 Plug	(21)C13 (3)C19 Outlet

## APPROVALS

---

UL 60950-1, UL Listed, CSA, cUL Listed,  
CB by UL

CE, EN 55022 Class A, EN 55024, EN 61000-3-2, EN 61000-3-3

C-Tick AS/NZS CISPR 22: 2006