

# AETES

## DC/DC 110V Converter 250W

Power Boost of 300% for 1 sec

Fanless Natural Convection

Three Years Warranty

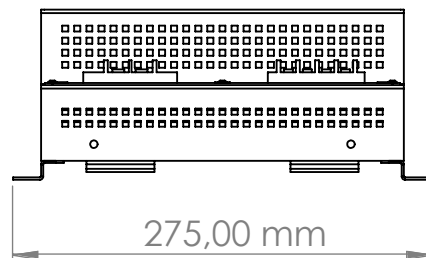
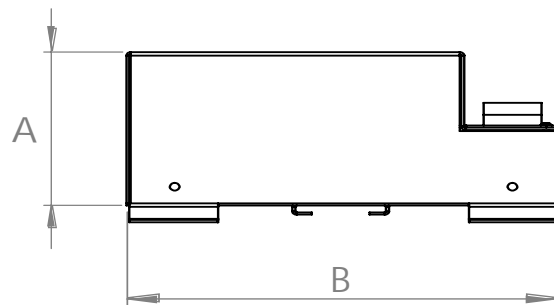
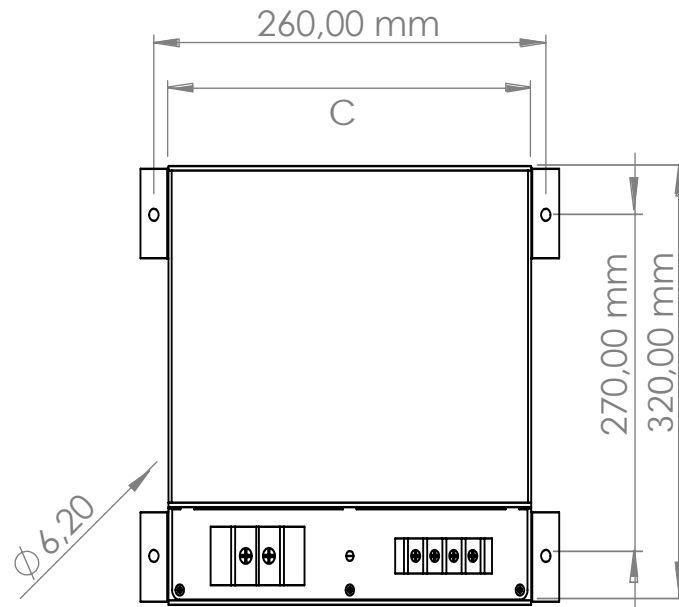


"...power alliance..."

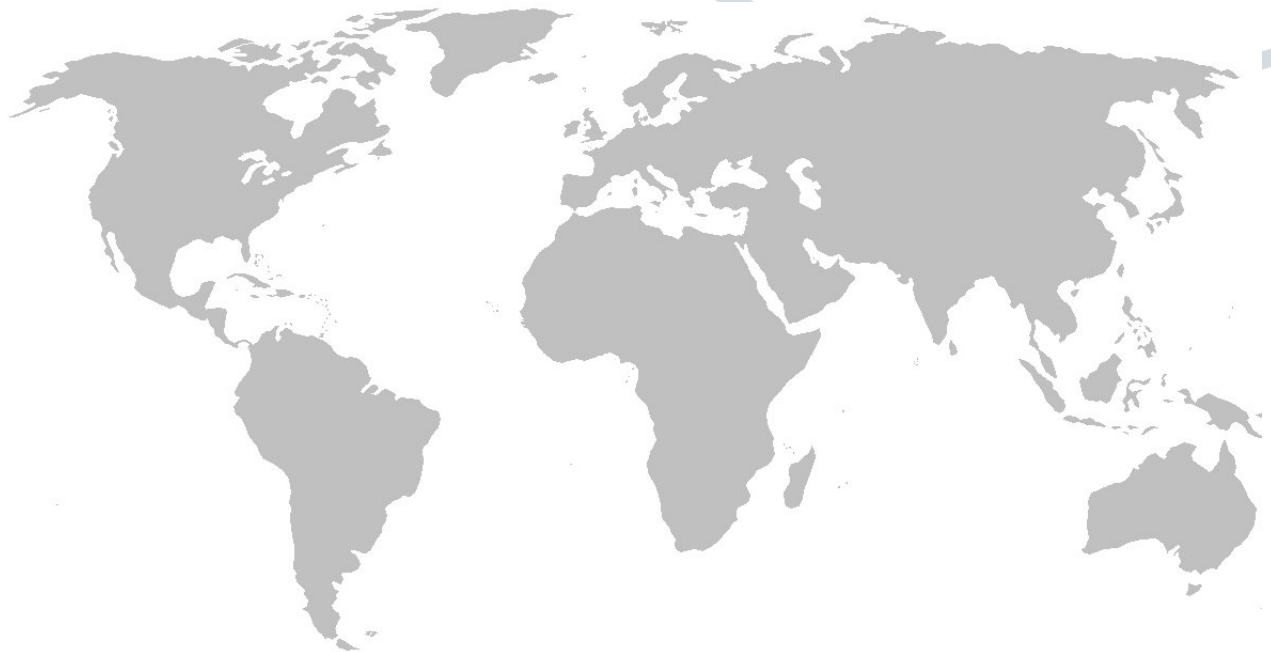
## Specification

| ITEMS                             | MODEL | CPW-024-110-250  | CPW-036-110-250  | CPW-048-110-250  | CPW-072-110-250  |
|-----------------------------------|-------|--|------------------|------------------|------------------|
| Input Voltage Nominal             |       | 24VDC  | 36VDC            | 48VDC            | 72VDC            |
| Input Voltage Range               |       | 19,2V...28,8V DC   | 28,8V...43,2V DC | 38,4V...57,6V DC | 57,6V...86,4V DC |
| Output Voltage                    |       | 110VDC   |                  |                  |                  |
| Max. Output Current               |       | 2,2A / 250W (Continuous)   |                  |                  |                  |
| Output Power Reserve              |       | 4,4A / 500W for 10min and 6,6A / 750W for 1sec (at <30°C)                  |                  |                  |                  |
| Output Over Current Protection    |       | Yes  |                  |                  |                  |
| Over Temperature Protection       |       | >+80°C   |                  |                  |                  |
| Input Reverse Polarity Protection |       | Yes  |                  |                  |                  |
| Short-Circuit Protection          |       | Continuous   |                  |                  |                  |
| Efficiency (Full Load)            |       | >85%   |                  |                  |                  |
| Load Regulation (max.)            |       | %3   |                  |                  |                  |
| Line Regulation (max.)            |       | 150mV  |                  |                  |                  |
| Ripple Noise (max.)               |       | 200mV  |                  |                  |                  |
| Mounting Kit                      |       | Ears Brackets  |                  |                  |                  |
| Remote On/ Off                    |       | Optional   |                  |                  |                  |
| DC-OK Contact                     |       | Optional   |                  |                  |                  |
| Status Indicator LED              |       | Optional   |                  |                  |                  |
| Enclosure Material/ Color         |       | Metal / Anthracite Grey (RAL7016 Texture)                                  |                  |                  |                  |
| Cooling                           |       | Free Air Convection  |                  |                  |                  |
| Operating Temperature             |       | -10°C to +60°C<br>(Derating linearly to 50% load above +30°C)              |                  |                  |                  |
| Storage Temperature               |       | - 40°C to +85°C  |                  |                  |                  |
| Humidity (Non Condensing)         |       | 20-90% RH operating, 10-90% RH non operating                               |                  |                  |                  |
| Withstand Voltage (One Minute)    |       | Input to Ground 2000VAC, Input to Output 2000VAC, Output to Ground 2000VAC |                  |                  |                  |
| Isolation Resistance              |       | >100MΩ at +25°C & 95%RH, Output to Ground 500VDC                           |                  |                  |                  |
| MTBF                              |       | >100,000 h (<80% load and at +25°C)  |                  |                  |                  |
| Vibration Compatibility           |       | EN61373 - Category 1, Class B  |                  |                  |                  |
| Safety Compatibility              |       | EN60601-1, EN62368-1   |                  |                  |                  |
| EMI Compatibility                 |       | EN55032 Class B  |                  |                  |                  |
| Weight (typ.)                     |       | 3,8 kg   |                  |                  |                  |
| Dimensions                        |       | A:140 B:320 C:240 mm   |                  |                  |                  |
| Warranty                          |       | 3-YEAR   |                  |                  |                  |

# Drawing



*"...power alliance..."*



**AETES**  
*"...power alliance..."*

The specifications, drawings and images indicated in this document are based on current information. All content is subject to modifications or additions. For more information on our local sales offices, visit us at our website below.