

AETES

DC/DC 220V Converter 250W

Power Boost of 300% for 1 sec

Fanless Natural Convection

Three Years Warranty

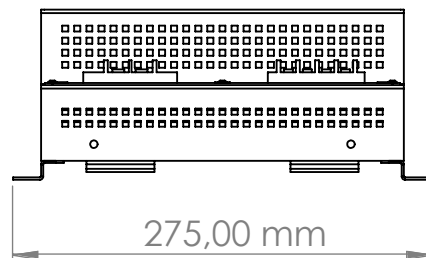
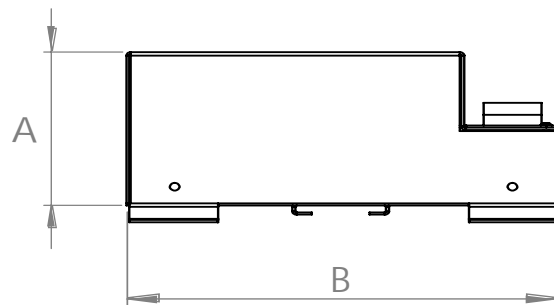
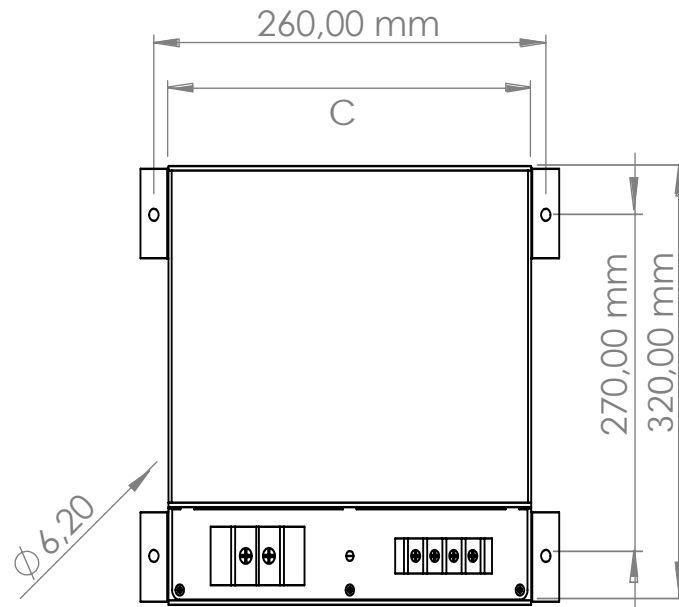


"...power alliance..."

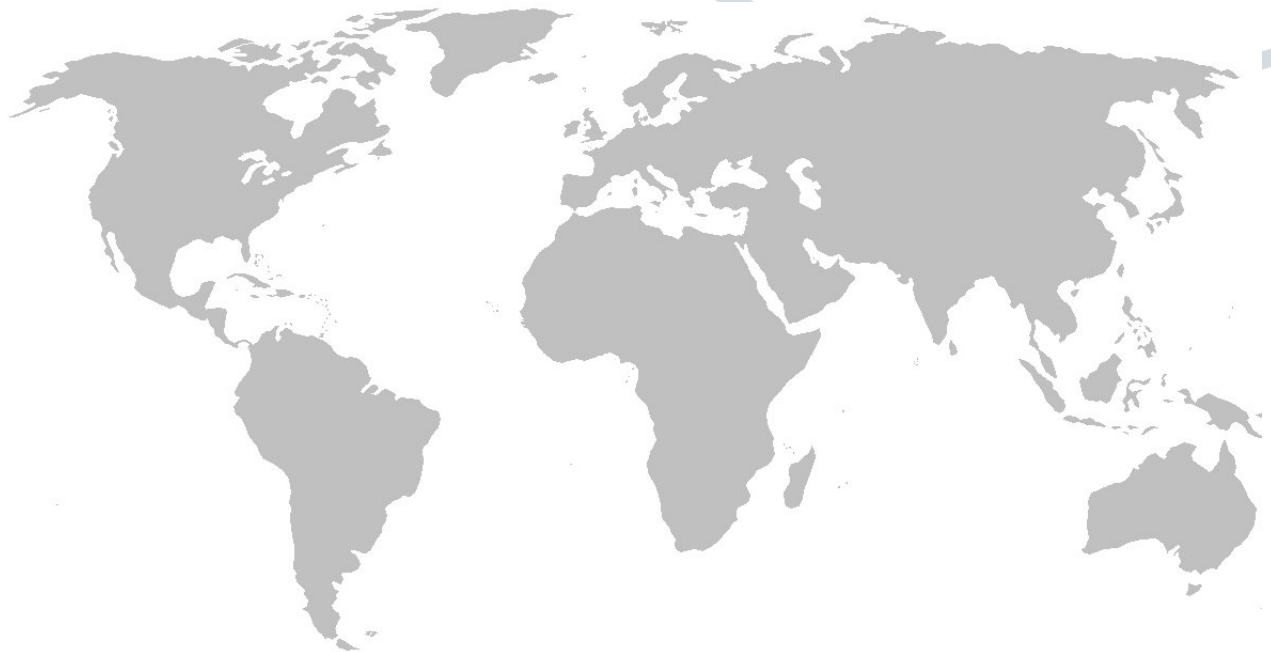
Specification

ITEMS	MODEL	CPW-024-220-250	CPW-036-220-250	CPW-048-220-250	CPW-072-220-250
Input Voltage Nominal		24VDC	36VDC	48VDC	72VDC
Input Voltage Range		19,2V...28,8V DC	28,8V...43,2V DC	38,4V...57,6V DC	57,6V...86,4V DC
Output Voltage		220VDC			
Max. Output Current		1,1A / 250W (Continuous)			
Output Power Reserve		2,2A / 500W for 10min and 3,3A / 750W for 1sec (at <30°C)			
Output Over Current Protection		Yes			
Over Temperature Protection		>+80°C			
Input Reverse Polarity Protection		Yes			
Short-Circuit Protection		Continuous			
Efficiency (Full Load)		>85%			
Load Regulation (max.)		%3			
Line Regulation (max.)		150mV			
Ripple Noise (max.)		200mV			
Mounting Kit		Ears Brackets			
Remote On/ Off		Optional			
DC-OK Contact		Optional			
Status Indicator LED		Optional			
Enclosure Material/ Color		Metal / Anthracite Grey (RAL7016 Texture)			
Cooling		Free Air Convection			
Operating Temperature		-10°C to +60°C (Derating linearly to 50% load above +30°C)			
Storage Temperature		- 40°C to +85°C			
Humidity (Non Condensing)		20-90% RH operating, 10-90% RH non operating			
Withstand Voltage (One Minute)		Input to Ground 2000VAC, Input to Output 2000VAC, Output to Ground 2000VAC			
Isolation Resistance		>100MΩ at +25°C & 95%RH, Output to Ground 500VDC			
MTBF		>100,000 h (<80% load and at +25°C)			
Vibration Compatibility		EN61373 - Category 1, Class B			
Safety Compatibility		EN60601-1, EN62368-1			
EMI Compatibility		EN55032 Class B			
Weight (typ.)		3,8 kg			
Dimensions		A:140 B:320 C:240 mm			
Warranty		3-YEAR			

Drawing



"...power alliance..."



AETES
"...power alliance..."

The specifications, drawings and images indicated in this document are based on current information. All content is subject to modifications or additions. For more information on our local sales offices, visit us at our website below.