

AETES

750V DC/DC Converter 1kW

Fanless Free Air Convection
Wide Temperature Range
Three Year Warranty

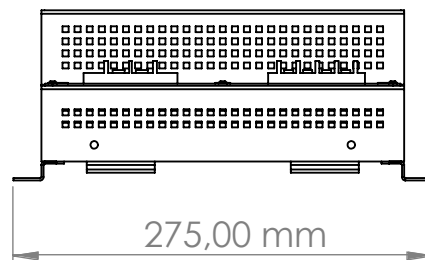
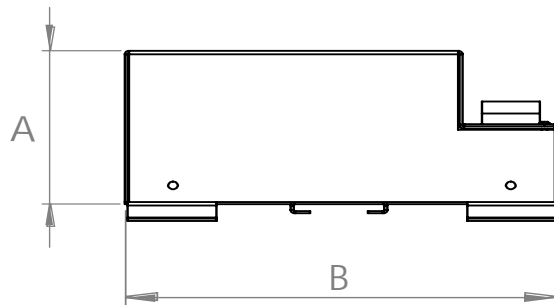
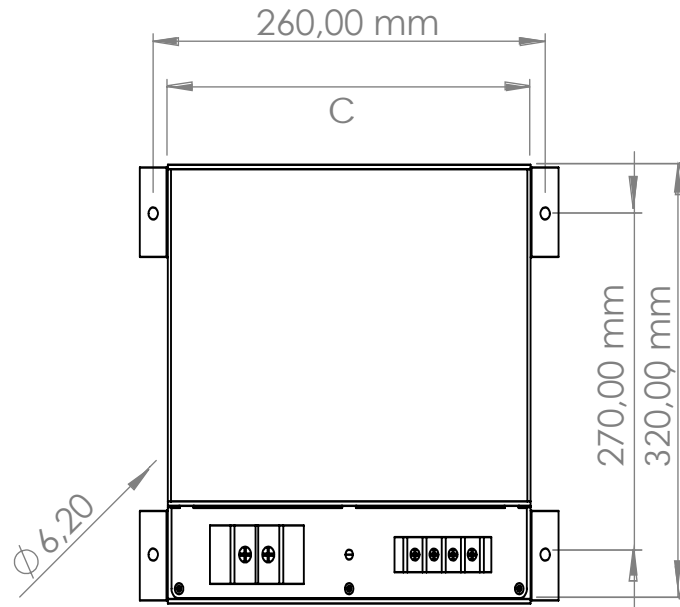


"...power alliance..."

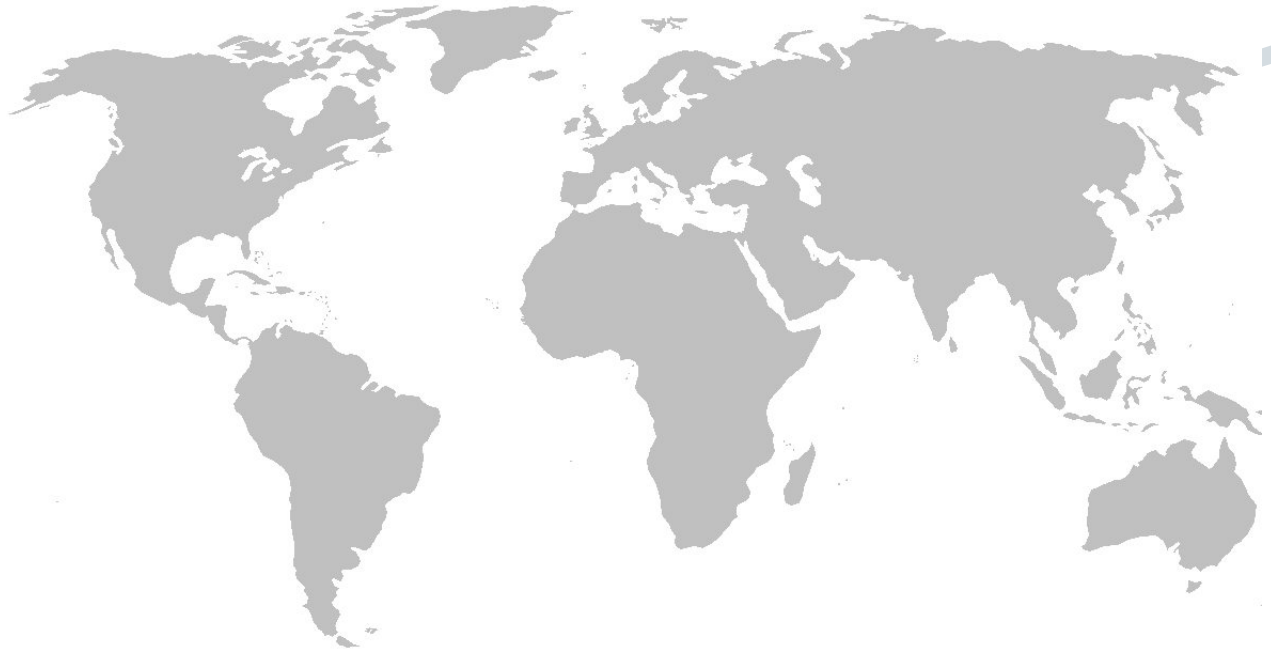
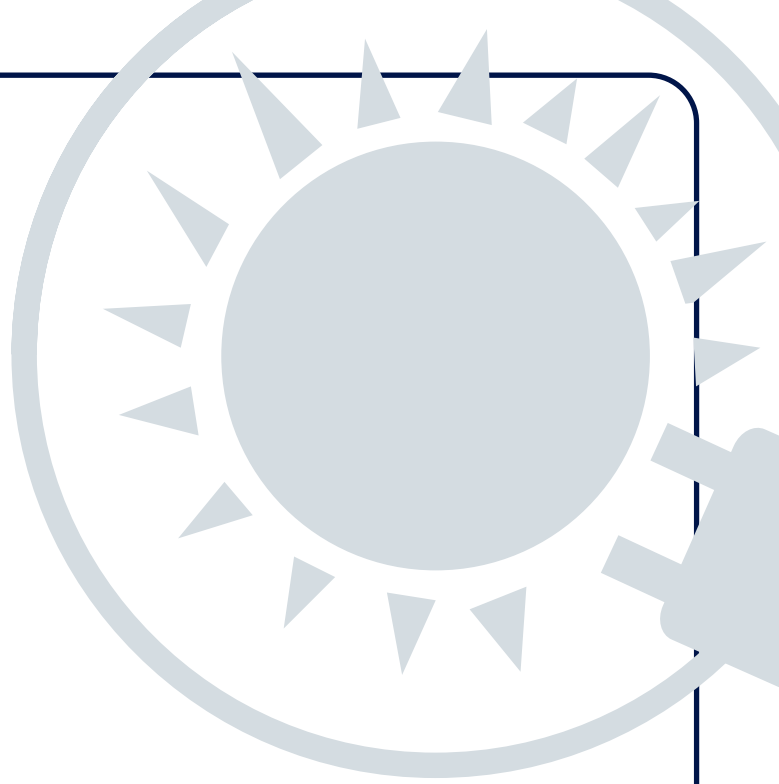
Specification

ITEMS	MODEL	CPW-750-024-1K0	CPW-750-048-1K0
Input Voltage Range		750VDC (500V...1000V DC)	
Output Power Rating		1000 Watt	
Output Voltage		24VDC	48VDC
Max. Output Current (DC)		40 Amp	20 Amp
Input Reverse Polarity Protection		Yes	
Over Current Protection		>110% (Auto-recovery)	
Over Voltage Protection		110% (Max. 60 sec)	
Output Short Circuit Protection		Yes (Auto-recovery)	
Hold Up Time (Typ.)		12ms at 750VDC	
Efficiency (Typ.)		93%	
Load Regulation (0%-100% load))		±2.0%	
Line Regulation (max.)		±1.0%	
Ripple Noise (max.)		300mV	
Output Voltage Accuracy		±1.0%	
Switching Frequency		65 kHz	
Temperature Coefficient		±0.02% /°C	
Over Temperature Protection		Yes	
Operating Temperature		-40°C to +70°C, derating linearly to 70% load above +55°C	
Storage Temperature		-40°C to +85°C	
Humidity (non condensing)		10-95%RH non operating	
Cooling		Free Air Convection	
Enclosure Material & Color		Metal / Anthracite Grey (RAL7016 Texture)	
Vibration and Shock Compatibility		EN61373 - Category 1, Class B	
MTBF		MIL-HDBK-217F@25°C ≥ 300,000 h	
Isolation (1 min.)		Input to Ground 4000VAC, Input to Output 4000VAC, Output to Ground 4000VAC	
Insulation Resistance		>50MΩ at 25°C & 70%RH, Output to Ground 500VDC	
Immunity Compatibility		EN61000-4 , -2 , -3 , -4 , -5 , -8	
Safety Compatibility		EN62109-1	
EMI Compatibility		EN55032 FCC Class A	
Weight (Typ.)		4,8 kg	
Size (D x H x W)		135 x 320 x 240 mm	
Warranty		3-Year	

Drawing



"...power alliance..."



AETES
"...power alliance..."

The specifications, drawings and images indicated in this document are based on current information. All content is subject to modifications or additions. For more information on our local sales offices, visit us at our website below.