

# AETES

## EPW DC/AC Inverter 400VA

Full-Load Range  $-10^{\circ}\text{C}$  to  $+60^{\circ}\text{C}$

Power Boost of 125% for 30s

Pure Sine Wave 50/60Hz

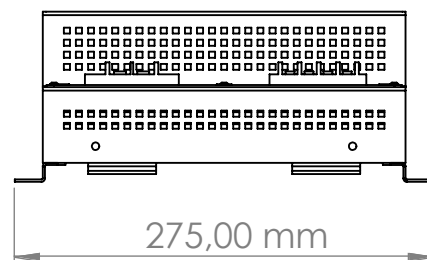
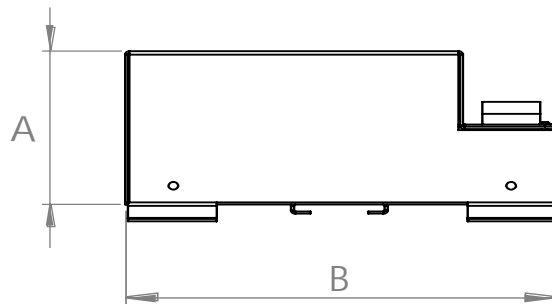
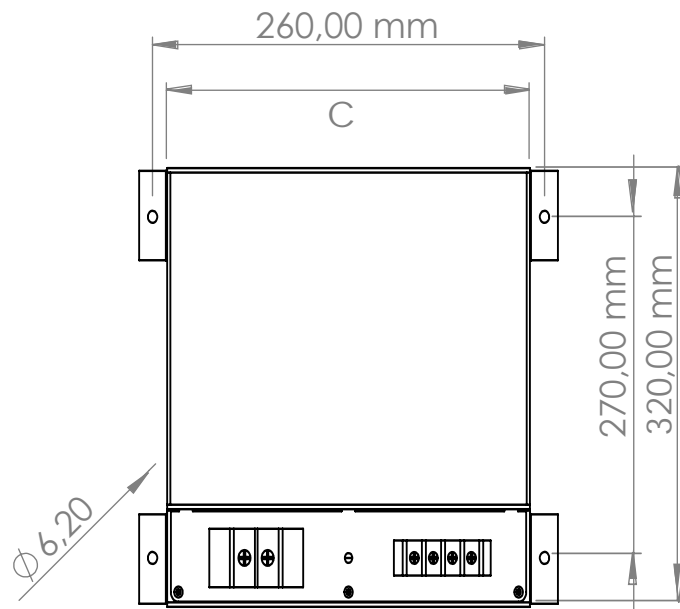


"...power alliance..."

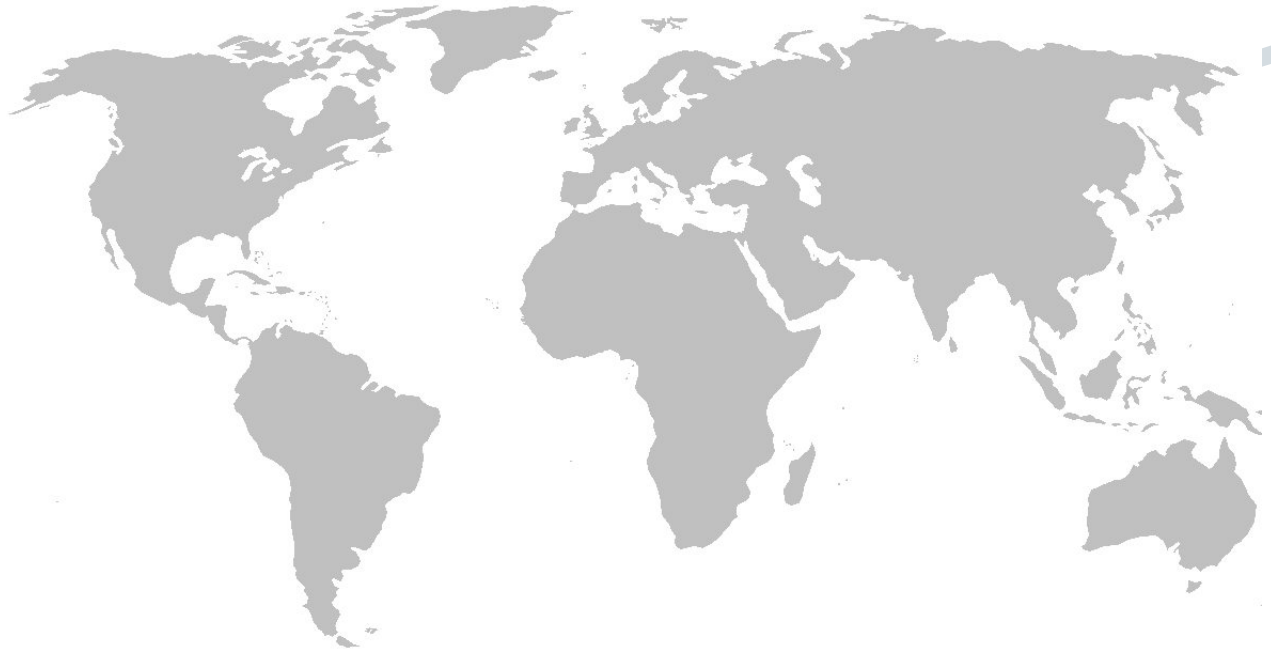
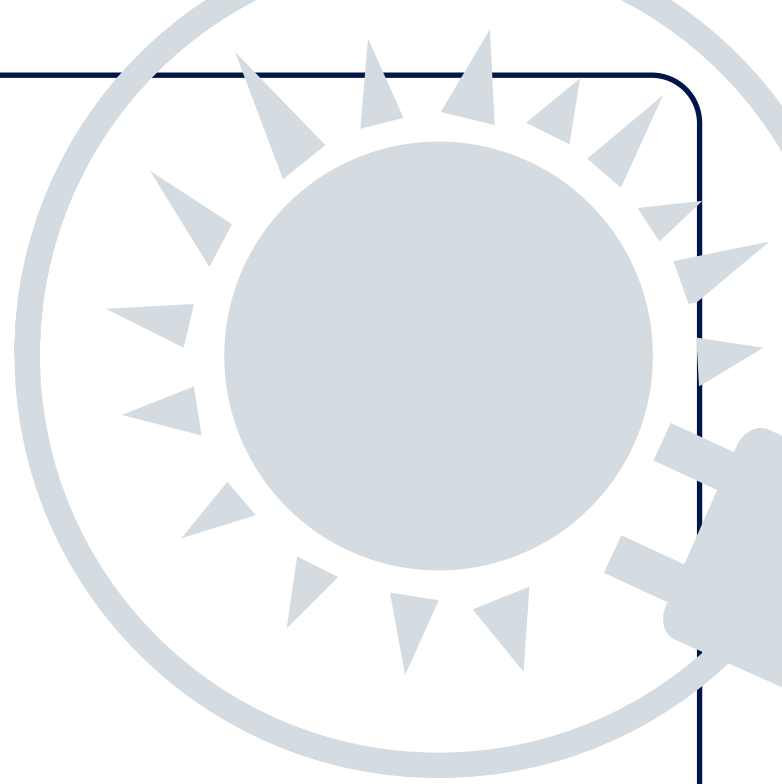
## Specification

ITEMS	MODEL	EPW-060-1P1-400	EPW-108-1P1-400	EPW-130-1P1-400
Input Voltage Range		36V...72V DC	75V...140V DC	90V...170V DC
Output Voltage		1-Phase (P-N) 100V, 110V, 115V, 120V AC (Optional)		
Output Frequency		50Hz / 60Hz (Switchable)		
Output Power Rating (max.)		400VA (400 Watt)		
Output Power Boost Capability		500W for 30 sec. at <40 °C		
Output Over Load Protection		Yes		
Over Temperature Protection		Yes >+80°C		
Short-Circuit Protection		Yes		
Efficiency Typ.		75%		
Frequency Accuracy (max.)		0.02%		
Line Regulation (max.)		<±1%		
Load Regulation (max.)		<±1%		
THD Linear (max.)		<±2%		
Parallel Redundant Operation		Yes		
Remote On/ Off		Yes		
Status Indicator LED		Yes		
Enclosure Material/ Color		Aluminum / Anthracite Grey (RAL7016 Texture)		
Cooling		Internal Fan-Forced		
Operating Temperature		-10°C to +60°C (Full-Load Range)		
Storage Temperature		-40°C to +85°C		
Humidity (Non Condensing)		20-95% RH operating and non operating		
Withstand Voltage (One Minute)		Input to Ground 1500VAC, Input to Output 1500VAC, Output to Ground 1500VAC		
Isolation Resistance		>50MΩ at +25°C & 95%RH, Output to Ground 500VDC		
Shock Compatibility		20G (3x 3D) 10ms		
Vibration Compatibility		EN61373 - Category 1, Class B		
Safety Compatibility		EN60950-1		
EMI Compatibility		EN55032 Class B		
Weight (Typ)		4,6 kg		
Dimensions		A:140 B: 320 C: 240 mm		
Warranty		2-YEAR		

# Drawing



*"...power alliance..."*



**AETES**  
*"...power alliance..."*

The specifications, drawings and images indicated in this document are based on current information. All content is subject to modifications or additions. For more information on our local sales offices, visit us at our website below.