

# AETES

RACK STS 5U 3-PH 30A-60A

*Fastest Switching Time*

*Multilingual LCD Control Panel*

*Fully Microprocessor Controlled Design*



*"...power alliance..."*

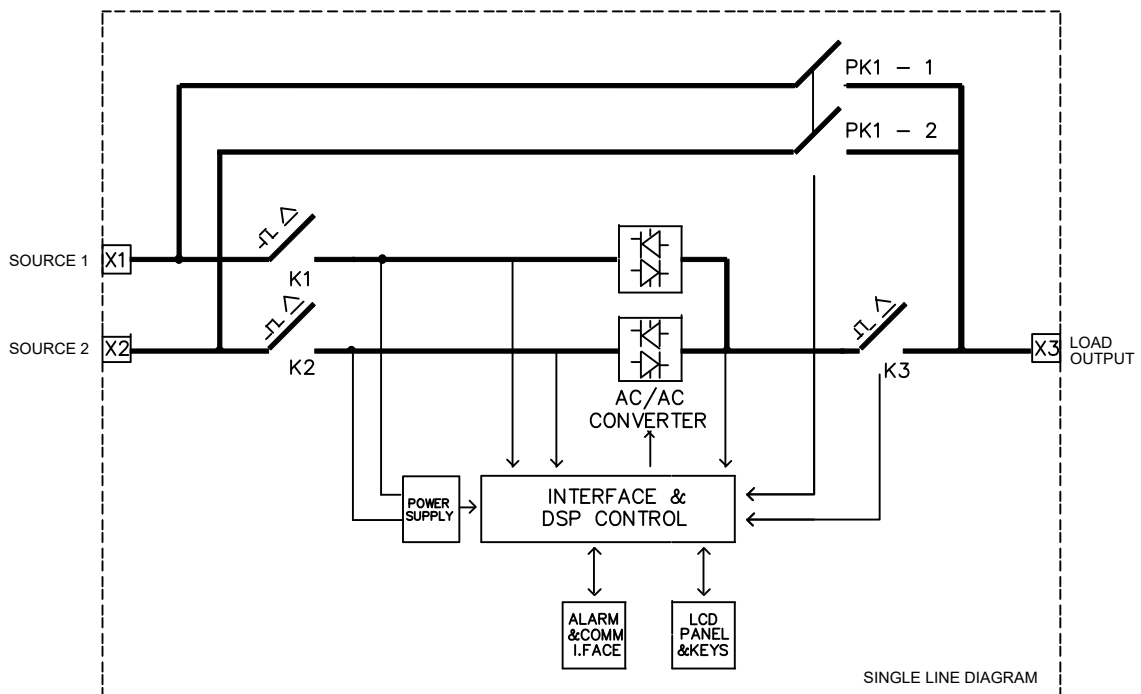
## DESCRIPTION

AETES Industrial Rack STS 5U series area three phase, 3-pole and 4-pole Static Transfer Switches, which can switch between to independent AC sources without interrupting the output powerless than  $\frac{1}{4}$  cycle. With a sense and transfer time of less than 5 ms, the AETES Rack STS represents the highest performance power switching solution available for the most critical applications. AETES Rack STS systems effective power protection for a wide range of applications including Telecom, Defence, Energy and General Industrial.

## FEATURES

- LCD Control Panel for Easy Operation
- User Language Options (DE, FR, EN, ES, PT, TR)
- Fully DSP logic for fast and Reliable Control
- Source Priority Selection
- Password Protected Menu Structure
- Modbus Communication via RS232 Serial Port
- Adjustable Operation Parametres
- Audible & Visual Alarms
- Programmable Dry Contacts
- Manual By-pass for Maintenance
- 19" Rack Mount Compact Design
- High Efficiency, up to 98%
- 2 Years Warranty

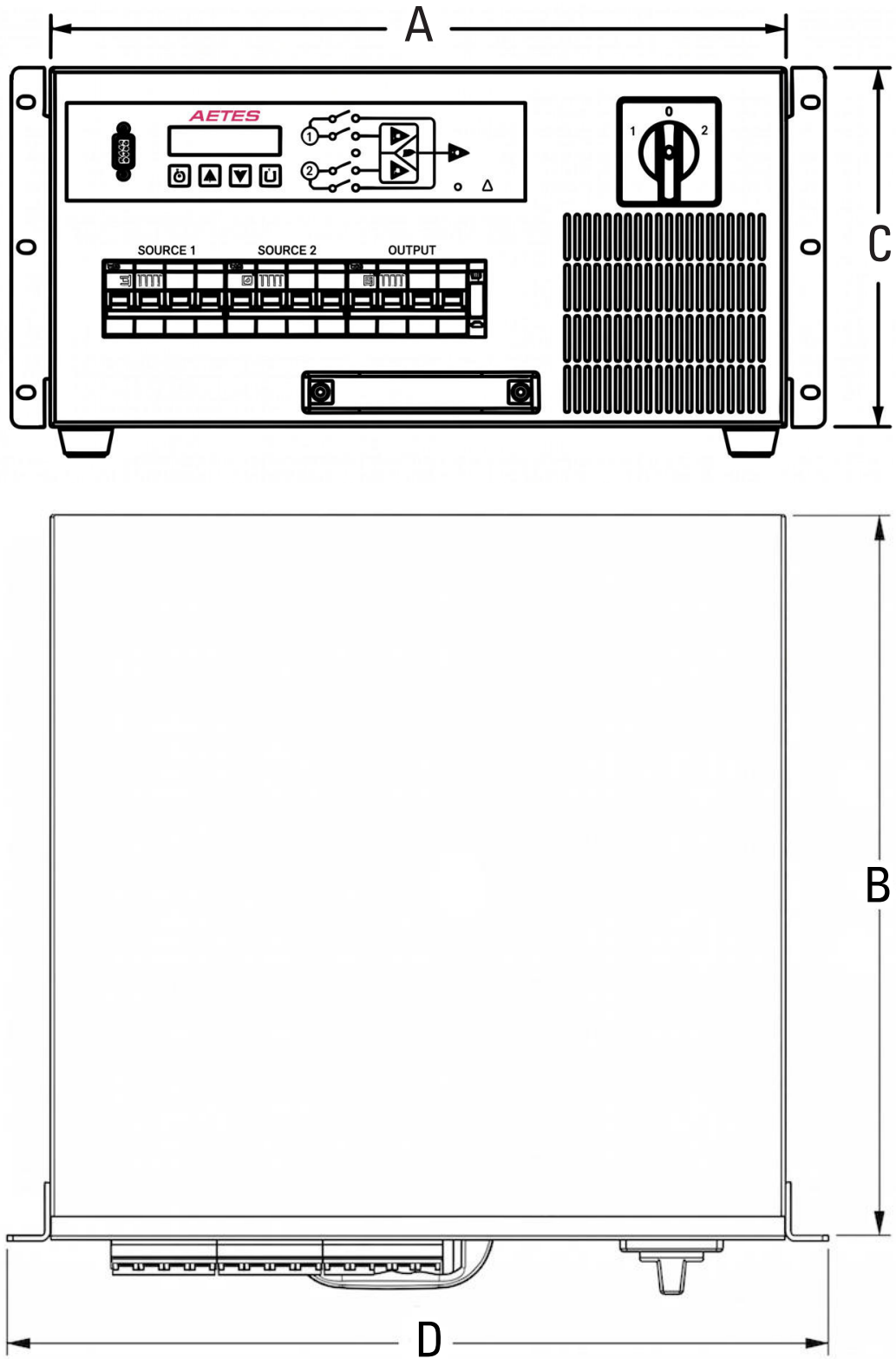
## LINE DIAGRAM



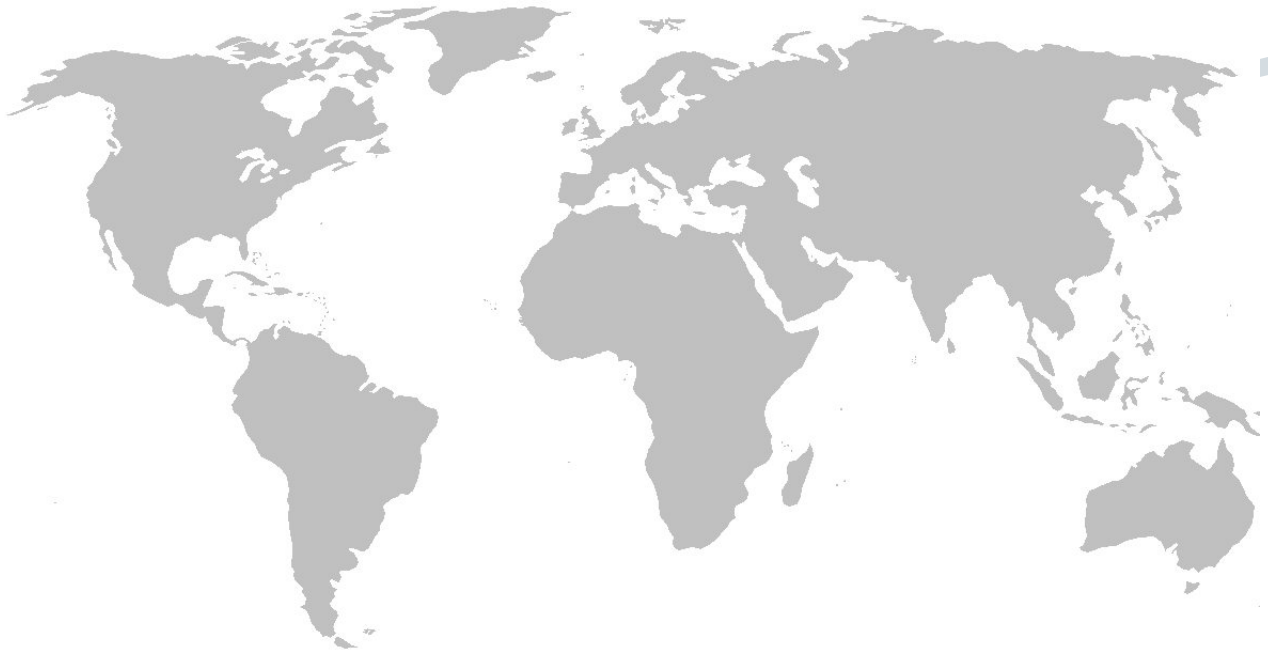
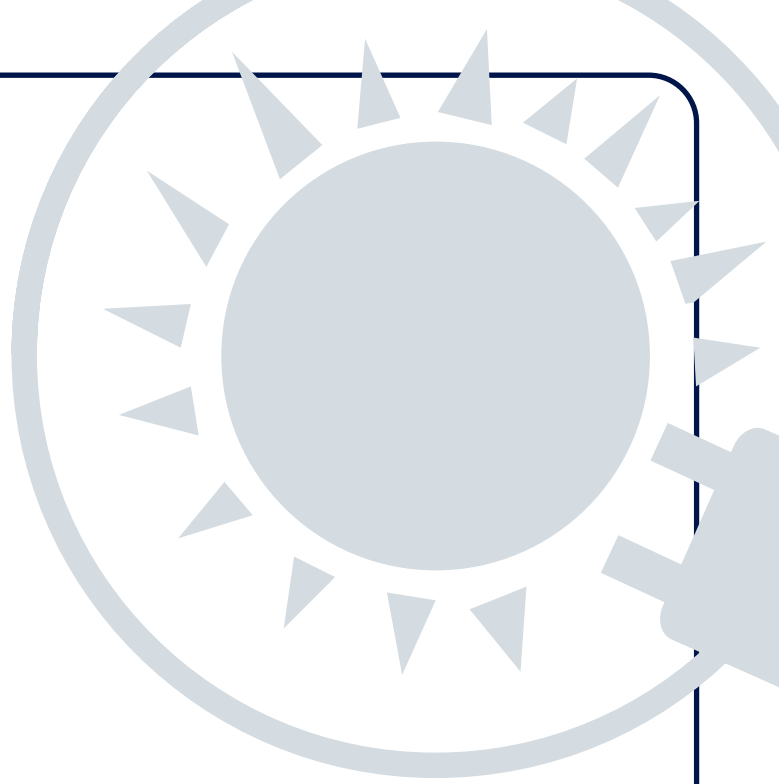
# TECHNICAL SPECIFICATION

MODELS	STS-5RU-3P2-30A	STS-5RU-3P4-30A	STS-5RU-3P2-60A	STS-5RU-3P4-60A
<b>INPUT</b>				
Nominal Voltage ( $\pm 10\%$ )	3-ph 190V/208V/220V	3-ph 440V/460V/480V	3-ph 190V/208V/220V	3-ph 440V/460V/480V
Nominal Frequency ( $\pm 10\%$ )	60 Hz			
Maximum Current	30 AMP		60 AMP	
Input Connection Type	Internal Cable Terminal (Rear)		Internal Cable Terminal (Rear)	
Overcurrent Protection	(2) MCB Circuit Breaker 30 Amp		(2) MCB Circuit Breaker 60 Amp	
<b>OUTPUT</b>				
Output Connection Type	Internal Cable Terminal (Rear)		Internal Cable Terminal (Rear)	
Overcurrent Protection	(1) MCB Circuit Breaker 30 Amp		(1) MCB Circuit Breaker 60 Amp	
Over Temperature Protection	Yes		Yes	
Retransfer Inhibit	Yes		Yes	
Transfer Topology	3-Pole or 4-Pole (Order Option)			
Transfer Time	<4.2ms (Sync) & <3/4 Cycle (Unsync)			
Efficiency	>%98			
<b>COMMUNICATION</b>				
Connectivity Ports	RS232 Modbus (Optional: RS485, TCP/IP)			
Dry Contacts	(1) Common Alarm & (4) Programmable Contacts			
Information Display	2 Line 2x16 LCD Display			
Measurements	Source Voltages, Difference Voltage, Output Voltage, Output Current			
Warnings	Source Fail, Source Not Sync, Output Fail, Over Current Block Over Temperature, Internal PSU Fault, Maintenance CB Closed			
<b>ENVIRONMENTAL</b>				
Cooling	Fan Forced			
Operating Temperature	0°C...+50°C			
Storage Temperature	-10°C...+70°C			
Operating Humidity	10%-90% RH (Non-Condensing)			
Operating Altitude	<2000m			
Acoustic Noise	<50dBA			
<b>PHYSICAL</b>				
Enclosure	Galvanised Steel			
Colour	Grey RAL7035			
Protection Level	IP20			
Dimensions	A:440 B:500 C:222 mm		A:440 B:600 C:222 mm	
Net Weight	22 kg		24 kg	
MOQ / Package	1 Unit / Plywood Crate 650x550x350 mm 30 kg		1 Unit / Plywood Crate 750x550x350 mm 32 kg	
Included Accessory	Rack Bracets & Case Feet		Rack Bracets & Case Feet	
<b>COMPATIBILITY</b>				
EMI Compatibility	EN62310-1			
Safety Compatibility	EN62310-2			
Performance Compatibility	EN62310-3			
Warranty	2 Years			

# DRAWING



*"...power alliance..."*



**AETES**  
*"...power alliance..."*

The specifications, drawings and images indicated in this document are based on current information. All content is subject to modifications or additions. For more information on our local sales offices, visit us at our website below.